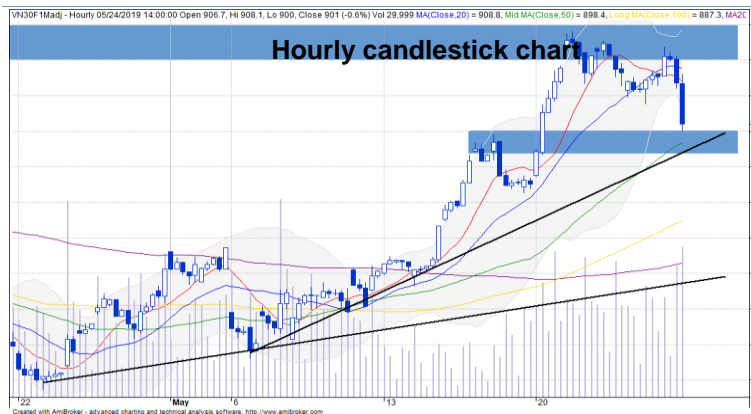


Confirm downtrend

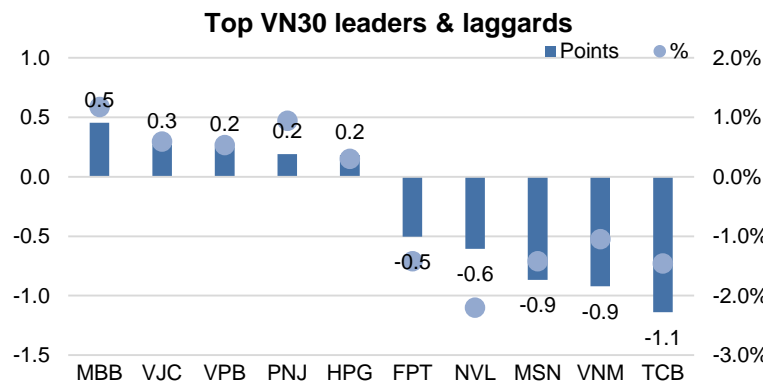
- VN30F1906 decreased sharply thanks to high selling pressure at the afternoon of last trading day. The bearish trend is confirmed in the short term as the price closes below the MA 20 with increasing volume. In addition, -DI crosses +DI going up and RSI falls.
- However, the pullback can appear as the price retests the significant support at 898-900 pts. Also, the February peak is a strong resistance or 910-915 pts.

Trading strategy: Short VN30F1906 if the price breaks the 898-900 pts zone. Target is around 880-885 pts and stoploss at 901 pts.

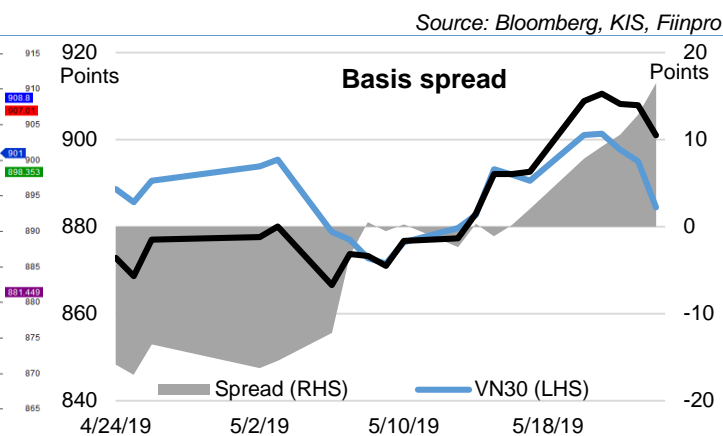
	Close Price	+/-	+/- %	Trading Volume	Open Interest	Fair Value	Expiration Date	Days to Expiration
	Points	Points	%	contracts	contracts	Points		days
VN30 Index	884.5	-10.6	-1.2%					
VN30F1906	901.0	-9.6	-1.1%	97,833	37,533	895	20/06/2019	27
VN30F1907	900.0	-10.9	-1.2%	1,151	998	897	18/07/2019	55
VN30F1909	901.0	-11.0	-1.2%	172	399	902	19/09/2019	118
VN30F1912	901.3	-7.7	-0.8%	100	168	909	19/12/2019	209



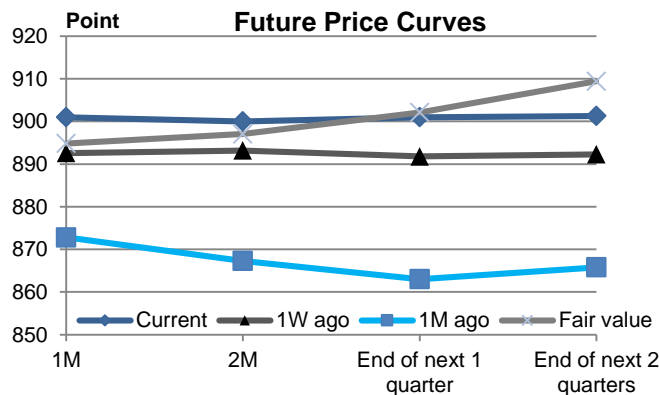
*Price is adjusted by Proportional Adjustment method Source: Fiinpro, KIS



Source: Bloomberg



Source: Bloomberg, KIS, Fiinpro



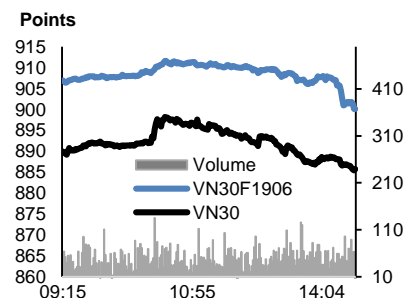
Source: Bloomberg, KIS, Fiinpro

Statistics 27/05/2019

	Hourly	Daily
Short-term	↓	-
Medium-term	-	-
Resistance 2	915	940
Resistance 1	910	915
Support 1	900	900
Support 2	895	890

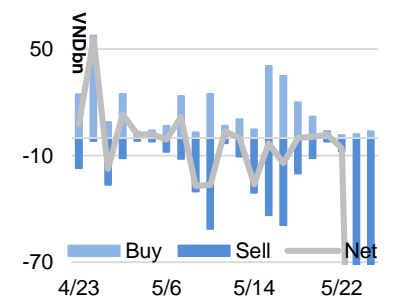
Source: KIS

Intraday chart VN30 & VN30F1905



Source: Bloomberg

Daily Foreign Trading



Source: Fiinpro

Mr. Hieu Tran
(+84 28) 3914 8585
(Ext: 1464)
hieu.ttm@kisvn.vn
www.kisvn.vn



VN30 INDEX MEMBERS											
Quote	Name	Industry	Index Weight	Current Price	Market Cap	PER	PBR	3M. VOL	Foreign Owned	52W High	52W Low
		Unit:	%	VND	VND bn.	x	x	'000 shares	%	VND	VND
CII	Ho Chi Minh City Infrastructure Investment JSC	Industrials	0.7%	23,300	5,772	69.2	1.2	810	53%	29,900	22,600
CTD	Coteccons Construction JSC	Industrials	0.8%	115,200	8,799	6.7	1.1	163	46%	170,000	114,000
CTG	Vietnam Joint Stock Commercial Bank for Industry and Trade	Financials	1.0%	21,200	78,936	14.3	1.1	4,145	30%	29,250	17,700
DHG	DHG Pharmaceutical JSC	Health Care	0.6%	116,100	15,180	27.6	5.0	162	54%	121,000	72,700
DPM	Petrovietnam Fertilizer & Chemicals JSC	Materials	0.5%	18,550	7,259	14.4	0.9	304	23%	23,700	16,100
EIB	Vietnam Export Import Commercial JSB	Financials	3.0%	17,800	21,884	44.1	1.4	191	30%	19,100	13,100
FPT	FPT Corp	Information Technology	4.0%	45,600	30,930	11.2	2.4	1,018	49%	48,379	35,000
GAS	PetroVietnam Gas JSC	Utilities	1.6%	106,500	203,836	17.5	4.6	498	4%	125,000	70,000
GMD	Gemadept Corp	Industrials	1.1%	27,250	8,091	12.1	1.3	359	49%	29,900	23,000
HDB	Ho Chi Minh City Development Joint Stock Commercial Bank	Financials	2.9%	26,500	25,996	9.1	1.7	1,430	25%	44,800	25,600
HPG	Hoa Phat Group JSC	Materials	6.6%	32,150	68,284	8.4	1.6	3,863	40%	44,571	27,000
MBB	Military Commercial Joint Stock Bank	Financials	4.4%	21,350	45,121	7.1	1.3	3,470	20%	26,387	18,050
MSN	Masan Group Corp	Consumer Staples	6.6%	87,200	101,427	19.2	3.4	520	41%	97,200	71,000
MWG	Mobile World Investment Corp	Consumer Discretionary	4.1%	88,700	39,289	12.4	3.9	522	49%	98,252	74,702
NVL	No Va Land Investment Group Corp	Real Estate	3.1%	58,200	54,152	15.8	2.7	527	7%	74,700	49,600
PNJ	Phu Nhuan Jewelry JSC	Consumer Discretionary	2.3%	107,500	17,953	16.8	4.4	322	49%	124,000	75,000
REE	Refrigeration Electrical Engineering Corp	Industrials	0.9%	32,900	10,201	5.8	1.1	544	49%	37,550	29,150
ROS	FLC Faros Construction JSC	Industrials	0.8%	30,000	17,028	79.9	2.9	7,718	3%	70,400	29,100
SAB	Saigon Beer Alcohol Beverage Corp	Consumer Staples	3.0%	261,200	167,503	40.3	10.4	29	63%	267,500	193,800
SBT	Thanh Thanh Cong - Bien Hoa JSC	Consumer Staples	0.8%	17,900	9,400	23.8	1.5	1,372	11%	21,557	12,547
SSI	SSI Securities Corp	Financials	1.3%	25,550	13,009	11.8	1.4	1,466	59%	34,900	24,450
STB	Saigon Thuong Tin Commercial JSB	Financials	3.3%	11,800	21,283	9.5	0.8	3,233	14%	14,400	9,670
TCB	Vietnam Technological & Commercial Joint Stock Bank	Financials	8.5%	23,200	81,121	9.5	1.5	1,919	23%	36,333	22,650
VCB	Bank for Foreign Trade of Vietnam JSC	Financials	3.2%	66,500	246,640	15.2	3.4	983	24%	70,000	46,800
VHM	Vinhomes JSC	Real Estate	4.8%	84,500	283,034	18.8	6.5	792	15%	97,600	60,000
VIC	Vingroup JSC	Real Estate	7.5%	115,000	384,783	88.3	6.5	721	11%	122,500	82,645
VJC	Vietjet Aviation JSC	Industrials	5.3%	119,900	64,939	12.2	4.6	793	20%	158,000	107,300
VNM	Vietnam Dairy Products JSC	Consumer Staples	9.7%	130,500	227,252	24.4	8.0	738	59%	152,600	111,500
VPB	Vietnam Prosperity JSC Bank	Financials	5.2%	18,650	45,818	6.9	1.3	1,988	23%	33,700	18,000
VRE	Vincom Retail JSC	Real Estate	2.5%	35,000	81,509	33.9	2.9	2,431	32%	39,950	26,700

Contacts

HCM City Head Office

Level 3, Maritime Bank Tower
180-192 Nguyen Cong Tru St., District 1, HCM City
Tel: (+84 28) 3914 8585
Fax: (+84 28) 3821 6898

Institutional Sales

Ms. Uyen Lam

Head of Institutional Sales
(+84 28) 3914 8585 (x1444)
uyen.lh@kisvn.vn

Disclaimer

This report has been issued by the **KIS VN Securities Corporation (KIS)** with the instructional contributions of **KIS VN Securities Corporation** whose employees are specified in the publication. This report is for information of its institutional and professional customers.

This report is and should not be construed as an offer to sell or a solicitation of an offer to purchase or subscribe for any investment. No consideration has been given to the particular investment objectives, financial situation or particular needs of any recipient. Investors are advised make their own financial decisions based on their independent financial advisors as they believe necessary and based on their particular circumstances such as their financial situation, investment objectives and other considerations.

In preparing this report, we have relied upon and assumed the accuracy and completeness of all information available from public and other sources which we believe to be reliable, but which we have not independently verified. KIS makes no express or implied guarantee, representation or warranty and accepts no responsibility or liability as to the accuracy or completeness of such information.

Opinions, estimates, and projections expressed are current opinions of the authors as of the original publication date appearing on this report only and the information, including the opinions contained herein, and are subject to change without notice.

KIS and its affiliates may from time to time perform investment banking or other services for, or solicit investment banking or other business from, companies mentioned herein. Further, KIS and its affiliates, and/or their officers, directors and employees involved in the preparation or issuance of this report may, from time to time, have long or short positions in, and buy or sell, the securities, or derivatives (including options) thereof, of companies mentioned herein, or related securities or derivatives in a manner that may be consistent or inconsistent with this report and opinions expressed therein. As a result, investors should be aware that KIS and its affiliates and/or their officers, directors and employees may have a conflict of interest that could affect this report.

This report shall not be copied, reproduced, distributed (in whole or in part) or disclosed by recipients to any other person without the express permission of KIS in writing.