

## DAILY DERIVATIVE 12-Apr-19

true**friend**

# KIS

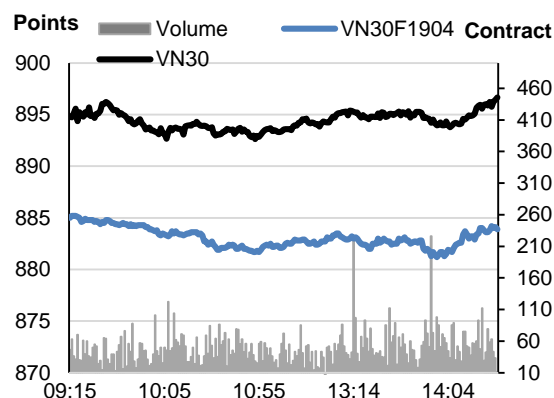
KIS Viet Nam  
Securities Corporation

	Close Price	+/-	Trading Volume
--	-------------	-----	----------------

Unit:	Points	Points	Contracts
VN30F1904	883.1	-2.1	84,577
VN30F1905	876.3	-1.7	996
VN30F1906	875.0	-0.8	28
VN30F1909	875.7	-1.1	34

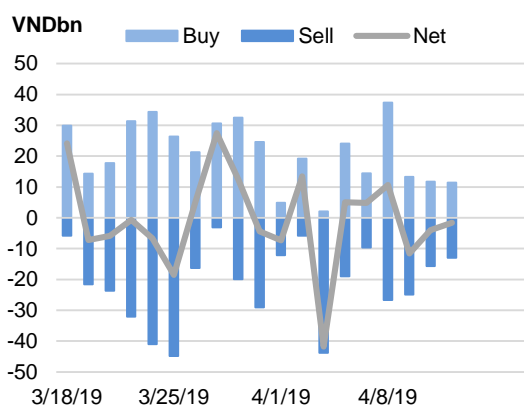
Source: Bloomberg

### Intraday chart VN30 vs VN30F1904



Source: Bloomberg

### Daily Foreign Trading



Source: Fiinpro

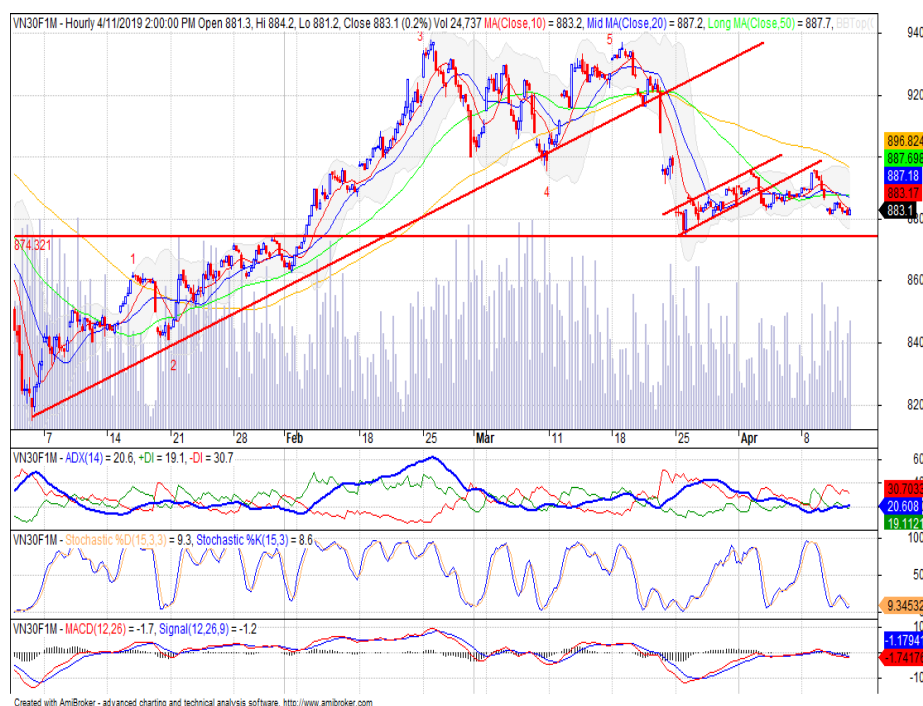
## Narrow intraday loss

### Technical outlook:

- The VN30F1904 recorded the contraction session, but buying force helped the intraday loss narrow. The price can be a pullback in the next session because the bullish engulfing pattern appears at significant support zone or 881-883 pts.
- However, the short-term downtrend is dominant as the price closed below moving averages and the MACD line confirms that signal. The temporary resistance is 887-890 pts, and strong support is 881-883 pts.

### Trading strategy:

- Short VN30F1904 if the price break 881-883 pts and then going down. Target around 875-876 pts. Stoploss at 884-885 pts.
- Long VN30F1904 if the price break 884-885 pts and then going up. Target around 890 pts. Stoploss at 880 pts.



Item	VN30F1904 Daily	VN30F1904 1H
Short-term	Neutral	
Medium-term	Neutral	
Support 1	880	880
Support 2	860	874
Resistance 1	900	890
Resistance 2	920	900



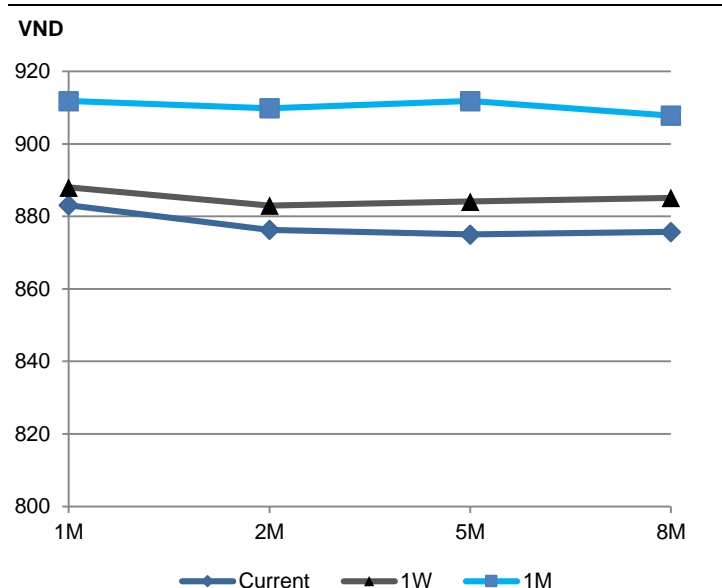
### Mr. Hieu Tran

(+84 28) 3914 8585  
(Ext: 1464)  
hieu.ttm@kisvn.vn  
www.kisvn.vn

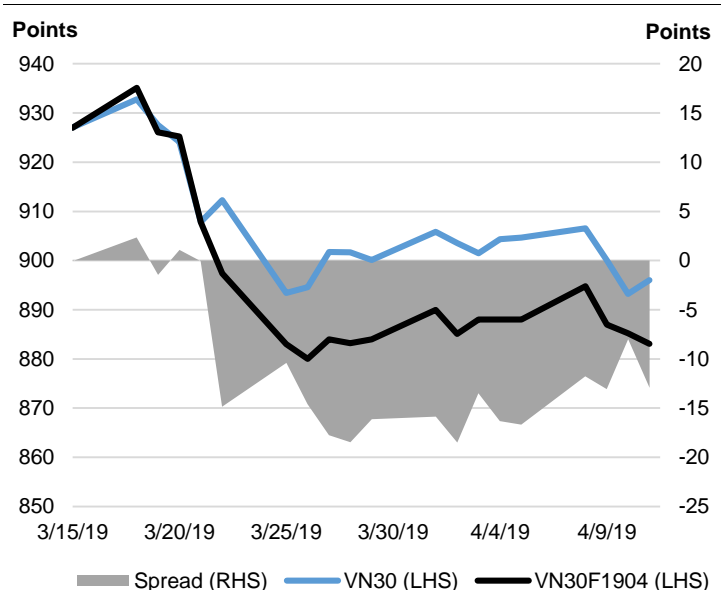
## FUTURE CONTRACTS

	Close Price	+/-	+/- %	Trading Volume	Open Interest	Fair Value	Expiration Date	Days to Expiration
	Unit: Points	Points	%	shares/contracts	contracts	Unit: Points		days
<b>VN30 Index</b>	896.0	2.8	0.3%					
<b>VN30F1904</b>	883.1	-2.1	-0.2%	84,577	884	883.6	18/04/2019	6
<b>VN30F1905</b>	876.3	-1.7	-0.2%	996	878	878.3	16/05/2019	34
<b>VN30F1906</b>	875.0	-0.8	-0.1%	28	877	877.4	20/06/2019	69
<b>VN30F1909</b>	875.7	-1.1	-0.1%	34	877	877.1	19/09/2019	160

Future Price Curves



Basis spread between VN30 vs VN30F1904



Top VN30 leaders	Points	Top VN30 laggards	Points
VIC	1.98	VPB	-0.47
MSN	0.72	VCB	-0.20
VHM	0.54	ROS	-0.15
VJC	0.37	HDB	-0.14
VNM	0.19	VRE	-0.14

Top VN30 gainers	%	Top VN30 losers	%
VIC	2.86	ROS	-2.02
SBT	1.37	VPB	-1.01
MSN	1.15	DHG	-0.85
VHM	1.08	SSI	-0.73
VJC	0.89	VCB	-0.58

VN30 INDEX MEMBERS											
Quote	Name	Industry	Index Weight	Current Price	Market Cap	PER	PBR	3M. VOL	Foreign Owned	52W High	52W Low
		Unit:	%	VND	VND bn.	x	x	'000 shares	%	VND	VND
CII	Ho Chi Minh City Infrastructure Investment JSC	Industrials	0.7%	24,400	6,044	66.3	1.2	1,052	54%	33,600	22,600
CTD	Coteccons Construction JSC	Industrials	0.8%	121,700	9,295	6.6	1.2	136	47%	170,000	119,700
CTG	Vietnam Joint Stock Commercial Bank for Industry and Trade	Financials	1.3%	21,950	81,729	15.1	1.2	5,899	30%	37,800	17,700
DHG	DHG Pharmaceutical JSC	Health Care	0.6%	116,500	15,232	26.2	4.9	243	43%	121,000	72,700
DPM	Petrovietnam Fertilizer & Chemicals JSC	Materials	0.4%	18,200	7,122	10.9	0.9	513	23%	23,700	16,100
EIB	Vietnam Export Import Commercial JSB	Financials	2.6%	17,500	21,515	32.6	1.4	238	30%	18,600	13,100
FPT	FPT Corp	Information Technology	3.3%	47,000	28,981	11.0	2.3	674	49%	56,870	38,500
GAS	PetroVietnam Gas JSC	Utilities	1.5%	105,000	200,965	17.9	4.5	556	4%	136,000	70,000
GMD	Gemadept Corp	Industrials	1.0%	26,250	7,794	4.3	1.3	431	49%	30,150	23,000
HDB	Ho Chi Minh City Development Joint Stock Commercial Bank	Financials	2.9%	27,950	27,419	9.6	1.8	1,286	26%	52,400	27,500
HPG	Hoa Phat Group JSC	Materials	6.3%	31,950	67,859	7.9	1.7	4,782	40%	44,571	27,000
MBB	Military Commercial Joint Stock Bank	Financials	4.0%	22,000	46,495	7.8	1.5	4,961	20%	30,798	18,050
MSN	Masan Group Corp	Consumer Staples	7.1%	87,700	102,008	19.2	3.5	691	40%	106,800	71,000
MWG	Mobile World Investment Corp	Consumer Discretionary	3.7%	82,500	36,542	12.3	4.1	581	49%	98,252	73,502
NVL	No Va Land Investment Group Corp	Real Estate	2.8%	56,700	52,756	16.1	2.7	564	7%	74,900	49,300
PNJ	Phu Nhuan Jewelry JSC	Consumer Discretionary	2.1%	100,200	16,734	17.0	4.5	273	49%	131,333	75,000
REE	Refrigeration Electrical Engineering Corp	Industrials	0.8%	31,800	9,860	5.5	1.1	575	49%	40,400	29,150
ROS	FLC Faros Construction JSC	Industrials	0.8%	31,450	17,851	83.5	3.0	4,855	2%	93,333	30,500
SAB	Saigon Beer Alcohol Beverage Corp	Consumer Staples	3.7%	247,500	158,717	38.5	10.5	32	63%	267,500	193,800
SBT	Thanh Thanh Cong - Bien Hoa JSC	Consumer Staples	0.7%	18,500	9,715	41.4	1.8	1,532	11%	21,557	12,547
SSI	SSI Securities Corp	Financials	1.3%	27,250	13,875	10.4	1.5	1,566	60%	43,700	24,900
STB	Saigon Thuong Tin Commercial JSB	Financials	3.2%	12,050	21,734	12.1	0.9	3,789	14%	16,300	9,670
TCB	Vietnam Technological & Commercial Joint Stock Bank	Financials	8.8%	25,100	87,764	10.1	1.7	2,433	23%	36,333	23,250
VCB	Bank for Foreign Trade of Vietnam JSC	Financials	3.9%	68,500	254,058	16.9	4.0	1,206	24%	74,800	46,800
VHM	Vinhomes JSC	Real Estate	5.7%	93,500	313,180	20.8	7.2	698	15%	97,600	60,000
VIC	Vingroup JSC	Real Estate	8.0%	115,000	367,036	90.5	6.5	764	9%	122,500	81,818
VJC	Vietjet Aviation JSC	Industrials	4.7%	113,900	61,690	11.8	4.4	750	21%	181,667	107,300
VNM	Vietnam Dairy Products JSC	Consumer Staples	9.5%	135,600	236,135	25.6	9.2	829	59%	164,583	111,500
VPB	Vietnam Prosperity JSC Bank	Financials	5.2%	19,650	48,275	6.6	1.4	2,265	23%	42,455	18,350
VRE	Vincom Retail JSC	Real Estate	2.6%	34,800	81,043	28.3	2.8	2,251	32%	43,265	26,700

## Contacts

### HCM City Head Office

Level 3, TNR Tower

180-192 Nguyen Cong Tru St., District 1, HCM City

Tel: (+84 28) 3914 8585

Fax: (+84 28) 3821 6898

### Institutional Sales

#### Ms. Uyen Lam

Head of Institutional Sales

(+84 28) 3914 8585 (x1444)

uyen.lh@kisvn.vn

## Disclaimer

This report has been issued by the **KIS VN Securities Corporation (KIS)** with the instructional contributions of **KIS VN Securities Corporation** whose employees are specified in the publication. This report is for information of its institutional and professional customers.

This report is and should not be construed as an offer to sell or a solicitation of an offer to purchase or subscribe for any investment. No consideration has been given to the particular investment objectives, financial situation or particular needs of any recipient. Investors are advised make their own financial decisions based on their independent financial advisors as they believe necessary and based on their particular circumstances such as their financial situation, investment objectives and other considerations.

In preparing this report, we have relied upon and assumed the accuracy and completeness of all information available from public and other sources which we believe to be reliable, but which we have not independently verified. KIS makes no express or implied guarantee, representation or warranty and accepts no responsibility or liability as to the accuracy or completeness of such information.

Opinions, estimates, and projections expressed are current opinions of the authors as of the original publication date appearing on this report only and the information, including the opinions contained herein, and are subject to change without notice.

KIS and its affiliates may from time to time perform investment banking or other services for, or solicit investment banking or other business from, companies mentioned herein. Further, KIS and its affiliates, and/or their officers, directors and employees involved in the preparation or issuance of this report may, from time to time, have long or short positions in, and buy or sell, the securities, or derivatives (including options) thereof, of companies mentioned herein, or related securities or derivatives in a manner that may be consistent or inconsistent with this report and opinions expressed therein. As a result, investors should be aware that KIS and its affiliates and/or their officers, directors and employees may have a conflict of interest that could affect this report.

This report shall not be copied, reproduced, distributed (in whole or in part) or disclosed by recipients to any other person without the express permission of KIS in writing.