

## The tightening period

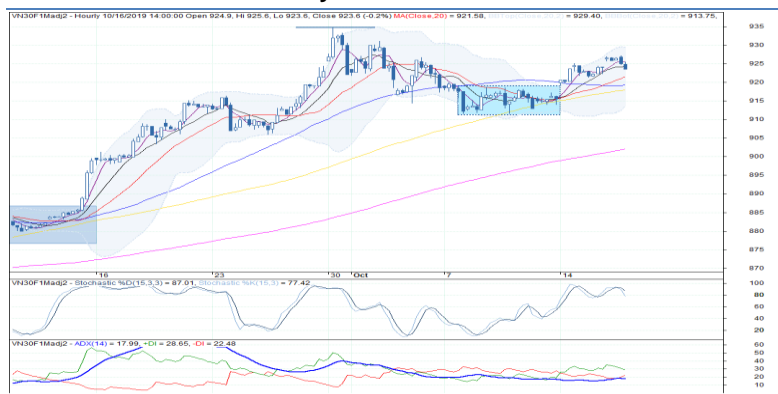
- VN30F1910 has decreased slightly after reaching the price objective of the rectangle pattern (927 pts).
- MA5 and MA10 are flat which accompany with the crossing down stochastic (hourly timeframe) → signalling the short-term tightening period.
- Market is in contango where the value of VN30F1911 is higher than VN30F1910 → positive sentiment in the short-term.
- In term of contract rollover, investors should roll on Thursday due to the current volume is below the certain level.

**Trading strategy:** Wait for the throwback to enter the long position at 919-920 pts, profit taking level at 935 pts and stoploss at 915 pts.

	Close Price	+/-	+/- %	Trading Volume	Open Interest	Fair Value	Expiration Date	Days to Expiration
	Points	Points	%	contracts	contracts	Points		days
<b>VN30 Index</b>	924.6	1.4	0.1%					
<b>VN30F1910</b>	923.6	-0.6	-0.1%	52,186	14,940	924	17/10/2019	3
<b>VN30F1911</b>	924.5	-1.0	-0.1%	4,753	4,144	926	21/11/2019	38
<b>VN30F1912</b>	922.9	-0.2	0.0%	28	553	927	19/12/2019	66
<b>VN30F2003</b>	923.0	0.0	0.0%	24	115	934	19/03/2020	157

Source: Bloomberg

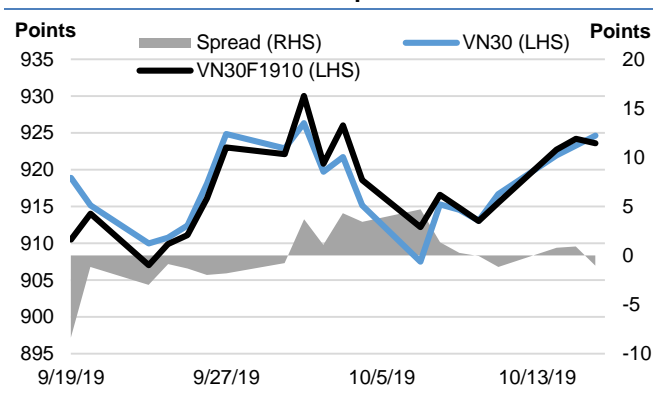
## Hourly candlestick chart



\*Price is adjusted by Proportional Adjustment method

Source: Fiinpro, KIS

## Basis Spread



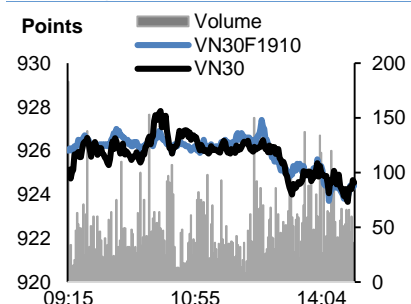
Source: Bloomberg

## Statistics 17/10/2019

	Hourly	Daily
<b>Short-term</b>	↑	↑
<b>Medium-term</b>	↑	-
<b>Resistance 2</b>	935	940
<b>Resistance 1</b>	925	935
<b>Support 1</b>	915	905
<b>Support 2</b>	905	885

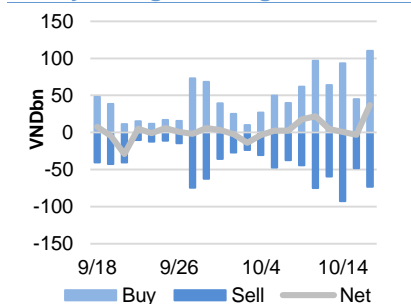
Source: KIS

## Intraday chart VN30 &amp; VN30F1910



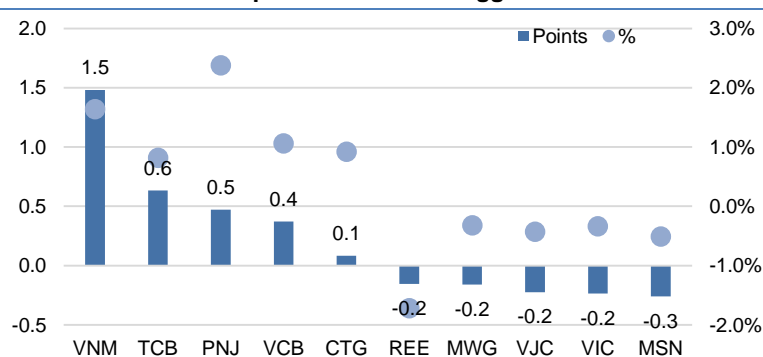
Source: Bloomberg

## Daily Foreign Trading



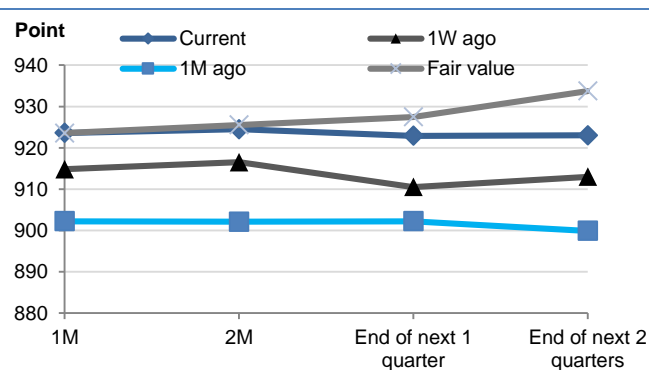
Source: Fiinpro

## Top VN30 leaders &amp; laggards



Source: Bloomberg

## Future Price Curves



Source: Bloomberg, KIS, Fiinpro

Mr. Dang Le

(+84 28) 3914 8585

(Ext: 1471)

dang.lh@kisvn.vn

www.kisvn.vn

VN30 INDEX MEMBERS											
Quote	Name	Industry	Index Weight	Current Price	Market Cap	PER	PBR	3M. VOL	Foreign Owned	52W High	52W Low
		Unit:	%	VND	VND bn.	x	x	'000 shares	%	VND	VND
BID	Bank for Investment and Development of Vietnam JSC	Financials	1.1%	41,150	140,680	19.7	2.6	1,358	3%	41,950	27,600
BVH	Bao Viet Holdings	Financials	0.8%	71,800	50,324	47.7	3.3	176	25%	104,000	70,700
CTD	Coteccons Construction JSC	Industrials	0.6%	89,000	6,790	6.6	0.8	75	49%	162,000	88,800
CTG	Vietnam Joint Stock Commercial Bank for Industry and Trade	Financials	1.0%	21,900	81,543	14.9	1.1	2,674	30%	25,700	17,700
DPM	Petrovietnam Fertilizer & Chemicals JSC	Materials	0.4%	15,100	5,909	17.7	0.8	406	19%	23,700	12,600
EIB	Vietnam Export Import Commercial JSB	Financials	2.6%	16,650	20,470	38.3	1.3	111	30%	19,100	13,100
FPT	FPT Corp	Information Technology	4.7%	57,500	39,001	13.2	2.9	1,728	49%	59,500	36,364
GAS	PetroVietnam Gas JSC	Utilities	1.5%	101,200	193,692	16.7	4.3	304	4%	119,500	82,400
GMD	Gemadept Corp	Industrials	1.1%	26,400	7,839	14.0	1.3	613	49%	29,900	23,800
HDB	Ho Chi Minh City Development Joint Stock Commercial Bank	Financials	2.9%	28,200	27,664	9.7	1.8	1,508	24%	37,400	24,450
HPG	Hoa Phat Group JSC	Materials	5.3%	21,300	58,811	7.7	1.3	5,212	38%	31,731	20,300
MBB	Military Commercial Joint Stock Bank	Financials	4.8%	23,300	53,182	7.8	1.6	4,908	22%	23,750	16,713
MSN	Masan Group Corp	Consumer Staples	5.5%	77,800	90,944	23.6	2.9	453	40%	92,000	71,000
MWG	Mobile World Investment Corp	Consumer Discretionary	5.4%	125,100	55,386	15.8	5.3	840	49%	129,500	78,452
NVL	No Va Land Investment Group Corp	Real Estate	3.5%	62,000	57,688	17.3	2.9	447	7%	74,700	53,700
PNJ	Phu Nhuan Jewelry JSC	Consumer Discretionary	2.2%	81,900	18,228	17.3	4.5	633	49%	89,300	64,800
REE	Refrigeration Electrical Engineering Corp	Industrials	1.0%	37,050	11,487	7.0	1.2	1,038	49%	40,150	29,450
ROS	FLC Faros Construction JSC	Industrials	0.7%	25,550	14,502	71.2	2.4	14,446	3%	43,500	24,850
SAB	Saigon Beer Alcohol Beverage Corp	Consumer Staples	2.7%	256,000	164,168	38.0	9.4	23	63%	291,000	212,000
SBT	Thanh Thanh Cong - Bien Hoa JSC	Consumer Staples	0.7%	18,750	11,001	42.2	1.7	1,378	6%	21,557	15,400
SSI	SSI Securities Corp	Financials	1.0%	21,550	10,949	10.8	1.2	1,680	57%	30,950	20,600
STB	Saigon Thuong Tin Commercial JSB	Financials	2.9%	11,050	19,930	9.2	0.8	3,605	13%	13,900	10,000
TCB	Vietnam Technological & Commercial Joint Stock Bank	Financials	8.4%	24,450	85,492	9.7	1.5	2,167	23%	29,300	19,900
VCB	Bank for Foreign Trade of Vietnam JSC	Financials	3.8%	86,100	319,334	18.2	4.2	835	24%	86,300	51,000
VHM	Vinhomes JSC	Real Estate	4.6%	86,400	289,398	19.2	6.7	543	15%	96,700	60,000
VIC	Vingroup JSC	Real Estate	7.5%	118,000	394,820	71.8	4.8	400	15%	126,500	89,800
VJC	Vietjet Aviation JSC	Industrials	5.7%	139,000	72,814	14.1	5.4	671	20%	140,600	107,300
VNM	Vietnam Dairy Products JSC	Consumer Staples	9.9%	130,400	227,076	23.9	8.0	790	59%	152,600	111,500
VPB	Vietnam Prosperity JSC Bank	Financials	5.8%	22,550	55,400	7.5	1.4	2,427	23%	24,250	17,500
VRE	Vincom Retail JSC	Real Estate	2.1%	31,850	74,173	30.8	2.6	1,991	32%	39,950	26,700

## Contacts

### HCM City Head Office

Level 3, Maritime Bank Tower  
180-192 Nguyen Cong Tru St., District 1, HCM City  
Tel: (+84 28) 3914 8585  
Fax: (+84 28) 3821 6898

### Pham Ngoc Thach Transaction Office

Level 3, 62A Pham Ngoc Thach, District 3, HCM City  
Tel: (+84 28) 7108 1188  
Fax: (+84 28) 3820 9229

### Hanoi Branch

Level 6, CTM Tower  
299 Cau Giay, Cau Giay District, Hanoi  
Tel: (+84 24) 3974 4448  
Fax: (+84 24) 3974 4501

### Ba Trieu Transaction Office

Level 6, 74 Ba Trieu, Hoan Kiem District, Hanoi  
Tel: (+84 24) 7106 3555  
Fax: (+84 24) 3632 0809

### Lang Ha Transaction Office

Level 5, TDL Tower, 22 Lang Ha, Dong Da District, Hanoi  
Tel (+84 24) 7108 1188  
Fax: (+84 24) 3244 4150

## Research Department

### Mr. Hoang Huy

Head of Research  
(+84 28) 3914 8585 (x1450)  
huy.hoang@kisvn.vn

## Institutional Sales

### Ms. Uyen Lam

Head of Institutional Sales  
(+84 28) 3914 8585 (x1444)  
uyen.lh@kisvn.vn

## Disclaimer

This report has been issued by the **KIS VN Securities Corporation (KIS)** with the instructional contributions of **KIS VN Securities Corporation** whose employees are specified in the publication. This report is for information of its institutional and professional customers.

This report is and should not be construed as an offer to sell or a solicitation of an offer to purchase or subscribe for any investment. No consideration has been given to the particular investment objectives, financial situation or particular needs of any recipient. Investors are advised make their own financial decisions based on their independent financial advisors as they believe necessary and based on their particular circumstances such as their financial situation, investment objectives and other considerations.

In preparing this report, we have relied upon and assumed the accuracy and completeness of all information available from public and other sources which we believe to be reliable, but which we have not independently verified. KIS makes no express or implied guarantee, representation or warranty and accepts no responsibility or liability as to the accuracy or completeness of such information.

Opinions, estimates, and projections expressed are current opinions of the authors as of the original publication date appearing on this report only and the information, including the opinions contained herein, and are subject to change without notice.

KIS and its affiliates may from time to time perform investment banking or other services for, or solicit investment banking or other business from, companies mentioned herein. Further, KIS and its affiliates, and/or their officers, directors and employees involved in the preparation or issuance of this report may, from time to time, have long or short positions in, and buy or sell, the securities, or derivatives (including options) thereof, of companies mentioned herein, or related securities or derivatives in a manner that may be consistent or inconsistent with this report and opinions expressed therein. As a result, investors should be aware that KIS and its affiliates and/or their officers, directors and employees may have a conflict of interest that could affect this report.

This report shall not be copied, reproduced, distributed (in whole or in part) or disclosed by recipients to any other person without the express permission of KIS in writing.